

Energising  
the whole  
world



Global Battery Co. Ltd., South Korea  
formerly known as Global & Yuasa Co. Ltd.

Unlimited Power  
**ROCKET**  
Since 1952  
BATTERY

# Our Global Presence



## Contents

Introduction

Our History

Our Reach

Achievements

Product Portfolio



**Our Headquarters**

- Mumbai, India

**Asia Pacific**

- Singapore

**Middle East**

- Sharjah

**China**

- Shenzhen

**Europe**

- London



Endless charge towards the future, the philosophy of

# GLOBAL BATTERY

The world demands new changes and presents new challenges to enterprises. In compliance with such demands, GLOBAL BATTERY has established an aggressive managerial strategy and is concentrating on developing state-of-the-art clean energy so that humankind may enjoy convenience in a clean environment. Realizing high value for customers on the basis of advanced technology and constant development through ceaseless change, challenge and innovation, we will do our best to emerge as a reliable global enterprise.



## Introduction

Global Battery has led the industry internationally since its establishment in 1952. The company has put forth its strength towards continuous innovations corresponding with the rapid changing market environment, and state-of-the-art technology in order to produce the best products. Since the 1960's Global Battery has been the leading battery manufacturer with Japan Storage Battery Co. Ltd. When the agreement expired in 1975, Global raised a capital and tied technology with Yuasa Corporation (Yuasa Battery Co. Ltd) of Japan, a world famous battery manufacturer.

Today, Global produces over 13 million storage batteries for use in many leading industries. Experience accumulated over the past 53 years has been successfully integrated into Global's products to earn worldwide respect. To endure & prosper we developed ourselves in resolution activities such as application engineering, R&D, QC Management, International Standards and etc which equated ROCKET Batteries as renowned among the UPS Manufacturers, Engineers, Industrial Customers, Consultants, etc. ROCKET has its credentials. Varied products ranges: 12V, 2V, Front Terminal, Gel, VRLA Battery etc. With more then 57 years of development works, our customers can be rest assured that the ROCKET brand will give them trouble free performance and high quality standards. ♪



**Global Battery Co. Ltd., South Korea**  
formerly known as Global & Yuasa Co. Ltd.









### **CERTIFICATE & PRICE**

The technology and reliability of Global Battery is demonstrated by numerous certifications and awards. All products of Global Battery have acquired all domestic and overseas certification such as ISO 9000, ISO14000, TS16949, JIS, UL and certifications of environment-friendliness.



### **NETWORK & PARTNER**

Since its formation Global Battery has built strong partnerships & relations through its worldwide network of subsidiaries & branch offices. Recognized for its excellent quality, our products are used extensively in many industries worldwide. With excellent after sales service, we can assure that you can use our products with peace of mind.



### **R&D**

Technological development is a continuing process with Rocket Batteries. Supreme labs and testing instruments from Airbin, Firing Circuits and BITRODE are used in the research. Our customers can thus be rest assured that Rocket batteries will give them trouble free performance for many years.

A Beautiful world where all people live together,  
this is the green promise of

# **GLOBAL BATTERY**

### **GO GREEN**

Most people do not realise that lead-acid battery is one of the most recycled consumer products in the world. More than 95 percent of the lead and plastic from the used batteries is recycled. Recycling not just protects the environment but also reclaims valuable lead and plastic for manufacturing and saves energy and money on raw materials. At Global Battery we take all measures to make sure the used batteries are recycled in the right way.

**A company that changes belief – GLOBAL BATTERY**





## The Energy that moves Korea, This is the 57-year history of **GLOBAL BATTERY**

Established under the Navy Technical Research Institute in 1952, GLOBAL BATTERY has grown remarkably with the managerial philosophy of practice, creativity, harmony and cooperation. Based on technical ties with YUASA in Japan, HAGEN in Germany and SAFT in France, GLOBAL BATTERY has grown to be the largest domestic lead-acid battery maker and one of the 5 largest lead-acid battery makers in the world by continuing R&D. An enterprise that has relentlessly sought to produce the best storage batteries for over half a century: GLOBAL BATTERY. GLOBAL BATTERY is currently preparing for its next stage of development: to grow to be the top lead-acid battery maker in the world, not only in Korea.

### History

- |          |  |          |  |
|----------|--|----------|--|
| 1952. 09 | Established the Juridical Foundation Navy Technology Research Institute  | 1986. 03 | Capital was increased to Won 3 billion by capital increase without consideration   |
| 1961. 07 | Renamed as Jinhae Cell Industry  | 1987. 06 | The 2 <sup>nd</sup> part of 3 <sup>rd</sup> factory was extended in the current factory for operation                              |
| 1966. 02 | Established Jinhae Cell Co Ltd.  | 1987. 09 | Capital was increased to Won 4.9 billion by capital increase without consideration.  |
| 1969. 04 | Capital was increased to Won 234 million by paid-up capital increase   | 1987. 11 | IPO and listing stock (capital, Won 7 billion)   |
| 1975. 04 | Technical and capital tie with YUASA Cell, Japan   | 1989. 05 | APT for employees was completed for moving-in  |
| 1975. 11 | Factory was moved to the present site (601-9 Namsan-dong Changwon) in Changwon Machine Industrial Complex (capital, Won 862,448,000) | 1989. 11 | Gwangju factory was completed for operation  |
| 1976. 04 | Registered as foreign investment company (Economic Planning Board No. 698)   | 1993. 01 | 2 <sup>nd</sup> APT for employees was completed for moving-in  |
| 1978. 07 | Acquired Sebang Group, the Korean stock company  | 1993. 05 | Relocation of head office (located in Yeoksam-dong Gangnam-gu Seoul)   |
| 1978. 09 | Trade name was changed to SEBANG GLOBAL BATTERY  | 1994. 11 | The 2 <sup>nd</sup> factory was completed in Gwangju for operation   |
| 1978. 12 | Capital was increased to Won 1,383,600,000 by paid-up capital increase   | 1996. 01 | Hanam factory was renamed as Gwangju factory   |
| 1979. 04 | Capital was increased to Won 1,447,420,000 by paid-up capital increase   | 1998. 01 | Re-evaluation of assets  |
| 1979. 11 | The 2 <sup>nd</sup> factory was extended in the current factory for operation  | 2004. 02 | The English trade name of the company was changed to GLOBAL BATTERY Co., Ltd.  |
| 1983. 03 | Designated as the 1 <sup>st</sup> grade factory in the quality control assessment (Assessment NO.B 1-8)                              | 2004. 06 | The trade name of J/V Company in Japan was changed to GS Yuasa international Ltd.  |
| 1984. 01 | Re-evaluation of assets  | 2005. 09 | The trade name of the largest stockholder was changed to Sebang Co Ltd.  |
| 1985. 07 | Purchased the office building of head office for removal (located in Bangbae-dong Seocho-gu Seoul)                                   | 2008. 02 | The system of joint representative directors was changed to single representative director (representative director, Kim Sung Kyu) |
| 1985. 01 | The 1 <sup>st</sup> part of 3 <sup>rd</sup> factory was extended in the current factory for operation                                |          |  |



### Certificate & Prize

- 1954.09 Acquired the patent right of inventing 2mm pole plate for lead-acid battery
- 1965.01 Acquired the certification of KS for car cell
- 1967.03 Acquired the certification of KSC 8508 for fixed lead-acid battery
- 1968.12 Acquired the certification of KSC 8508 for lead-acid battery for trains
- 1970.02 Acquired the certification of KSC 8509 for lead-acid battery for diesel locomotives
- 1970.02 Acquired the certification of KSC 8506 for lead-acid battery for electric equipment
- 1974.11 Acquired the certification of KSC 8511 for lead-acid battery for electric vehicle
- 1980.11 Won the Export Industry Order
- 1981.09 Acquired the additional certification of KSC 8504(20 types), 8505(26 types)
- 1982.12 Acquired the additional certification of KSC 8505 (35 types) KS
- 1983.03 Designated as the 1<sup>st</sup> grade factory for Q/C assessment (Assessment No. B ta 1-8)
- 1983.11 Acquired the additional certification of KSC 8505(13 types), 8506(3 types), 8510(8 types), 6008 (1 type)
- 1984.05 Acquired the note of authentication of atomic power
- 1987.03 Won the Bronze Tower Industrial Order on Tax Day
- 1988.11 Acquired the certification of UL (ES, ESG, UXL products)
- 1989.11 Acquired the certification of JIS
- 1991.11 Won the Prize of Export Tower (US\$ 50 million)
- 1992.03 Won the Prize of Minister of Finance on Tax Day
- 1992.11 Won the Prize of '92 'Establishing the working climate'
- 1993.07 Acquired the certification of ISO 9002 (DNV QA) for Changwon factory
- 1994.04 Acquired the certification of ISO 9001 for Gwangju factory
- 1994.05 Acquired the certification of ISO 9001 for Changwon factory
- 1994.11 Won the Presidential Prize of Industrial Standardization
- 1995.08 Won the Prize of 100 companies selected for quality management
- 1995.11 Won the Iron Tower Industrial order for quality management
- 1996.03 Won the Prize of Chief of Korea Customs Service on Tax Day
- 1997.01 Selected as an excellent company for labor-management cooperation of the Ministry of Labor
- 1997.11 Won the Prize of Export Tower in US\$ 100 million on the Export Day
- 1999.03 Won the Prize of Minister of Finance and Economy on Tax Day
- 2000.04 Won the Industrial Prize (Gwangju factory)
- 2000.09 Won the Prize of KS TOP
- 2001.04 Won the Prize of KS TOP
- 2002.01 Won the Prize of KS TOP
- 2002.03 Won the Presidential Prize of Industry on the 36<sup>th</sup> Taxpayer's Day
- 2002.10 Won the Grand Prize of KS
- 2003.08 Acquired the 1<sup>st</sup> grade authentication of electricity for KEPIC atomic power plant on the standard of electric industry and technology
- 2003.12 Acquired the certification of FAQ ISO/TS 16949 for Gwangju factory
- 2003.12 Acquired the certification of ISO 14001 for Gwangju factory
- 2004.09 Acquired the environment kitemark for VGS products
- 2005.09 Acquired the environment kitemark for CGS products
- 2005.11 Selected as an excellent company for quality competitiveness by the Minister of Industry and Resources
- 2006.09 Won the Prize of Dasan Technology
- 2006.10 Won the Prize for ng awarded by the Ministry of Science and Technology
- 2006.11 Won the Presidential Prize in the National Quality Management Contest
- 2007.02 Won the Prize of Excellence for labor-management cooperation awarded by the Manager's Association
- 2007.08 Acquired the authentication of new technology (NET) for Ni-MH battery.
- 2007.09 Won the Silver Tower Industry Order in the National Productivity Innovation Contest
- 2007.12 Won the Grand Prize of KS-certification (sector of quality innovation)
- 2007.12 Won the Grand Prize of Industrial Technology awarded by the Minister of Industry and Resources
- 2008.03 Acquired the environment kitemark for Ni-MH battery
- 2008.08 Acquired the certification of KS for Ni-MH battery
- 2008.10 Selected as an excellent company of quality competitiveness by the Minister of Knowledge Economy

# Our Network

London

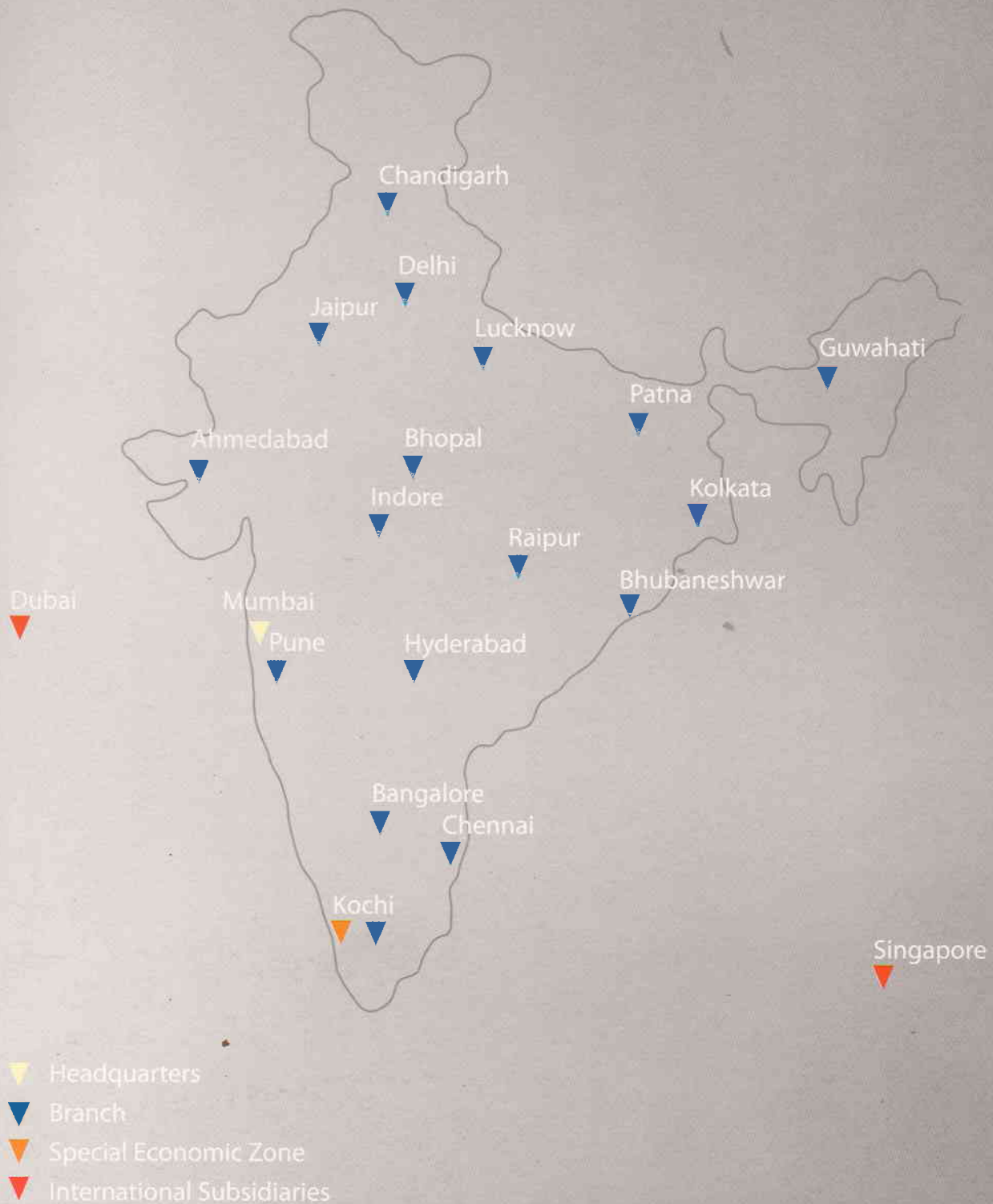


## **ROCKET BATTERIES**

*"One of the Oldest battery brands  
in India, Since 1988"*







# CERTIFICATES



IEC / BS



ISO 9001:2001



ISO 14001:2004



JIS MARK



DNV



Quality Management System



İMALATA YETERLİLİK BELGESİ

**All ROCKET Batteries are in Compliance with :**

IEC 60896 PART 1&2

BS 6290 PART 4

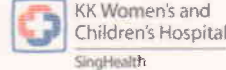
BS 6334

EUROBAT GUIDE - HIGH PERFORMANCE



# SOME OF OUR CUSTOMERS

## END USER SEGMENT



## OEM SEGMENT



## TELECOM CUSTOMERS



# ES Series

## ES Series (KOREA)

ESD Series

ESL Series

ESC Series

ESG Series







# Product Portfolio

**ES** (AGM - 12V 5Ah - 12V 75Ah)

**ESC** (AGM - 12V 100Ah - 12V 230Ah)

**ES** (AGM - 12V 40Ah - 12V 200Ah) MADE IN KOREA

**ESL** (AGM - 12V 65Ah - 12V 230Ah) LONG LIFE

**ESG** (AGM - 2V 200Ah - 2V 3000Ah)

**ESTG** (Tubular/OpzV+Gel 2V 200Ah - 2V 3000Ah)

**EAG** (AGM+GEL 2V 200Ah - 2V 3000Ah / 12V 17Ah - 12V 200Ah)

**EST** (TUBULAR/OPzS 2V 40Ah - 2V 2000Ah / 12V 20Ah - 12V 150Ah)

**EFT** (AGM - Front Terminal 12V 50 Ah - 12V 200 Ah)

**ESD** (AGM- Deep Cycle 12V 12Ah - 12V 200Ah)

# ES SERIES<sub>AGM</sub>

12V 5Ah - 12V 75Ah

The most advanced technology of ROCKET, Valve Regulated Lead Acid batteries make them highly useful in a broad range of applications. The use of high-purity calcium alloy maximizes the longevity of ROCKET batteries to ensure excellent performance in any circumstances. ES Series are specially designed to provide better cyclic life and are ideally suited for areas prone to frequent power failures.

The unique construction coupled with the use of special sealing epoxies and long sealing paths of ROCKET series ensures that no electrolyte leakage can occur from terminals or cases of any ROCKET Batteries. This feature ensures safe & efficient operation of ROCKET batteries in any position. ROCKET Batteries have excellent Deep Discharge Recovery and Charge Acceptance even after deep or prolonged discharge.

## MAIN APPLICATIONS

UPS  
Telecom Communication Equipments  
Fire Alarm & Security Systems  
Medical Instruments  
Emergency Lighting  
Computer Backup  
Solar Powered Systems.

## TECHNICAL FEATURES

Non-Spillable Sealed Construction  
Absorptive Glass Mat System (AGM System)  
ABS (Acrylonitrile Butadiene Styrene) container and cover  
Gas Recombination  
Maintenance-Free Operation  
Low Pressure Venting System  
Heavy-Duty Grids  
Low Self-Discharge - Long Shelf Life  
Wide Operating Temperature Range  
High Recovery Capability

## DESIGN LIFE

6 years upto 42 Ah at an ambient temperature of 20°C / 68°F  
10 years for 65Ah and more

## COMPLAINT STANDARDS

JIS  
IEC 60896 PART 1 & 2  
BS6290-4,  
Eurobat Guide - HIGH Performance

## SPECIFICATIONS OF ES BATTERIES

## AVAILABLE BOTH IN ABS PLASTIC & FLAME RETARDANT(FR) CONTAINERS

Battery Type	Nominal Voltage (V)	20 H Rate Capacity (AH)	Length (mm)	Width (mm)	Height (mm)	Total Height (mm)	Weight Approx (Kgs)	Terminal Type
ES5-12	12	5	90	70	101	107	1.8	F1
ES7-12	12	7	151	65	94	99	2.10	F12
ES9-12	12	9	151	65	94	100	2.65	F1/F2
ES12-12	12	12	152	98	95	101	3.7	F12
ES18-12	12	18	181	76	167	167	5.6	M5
ES26-12	12	26	166	175	125	125	7.2	M5
ES42-12	12	42	196	165	170	170	13.1	M6
ES65-12	12	65	350	166	179	183	19.5	M6
ES75-12	12	75	258	166	206	215	24.0	M6





# ESC SERIES<sup>AGM</sup>

12V 100Ah - 12V 230Ah

The most popular series of ROCKET Batteries; The ESC series has been performing with a proven track record for more than 52 years. It has successfully exemplified its quality and reliability in some of the most demanding power conditions by providing unrelentless backup power supply.

With the same characteristics as that of the ES series, the ESC series provides power reliability to applications which require longer backup time. This series is widely used in UPS as well as Telecommunication Applications in many parts of the world. The ESC series is world renowned and recognised as a highly reliable Battery System in the industry.

## MAIN APPLICATIONS

UPS  
Telecom Communication Equipments  
Fire Alarm & Security Systems  
Medical Instruments  
Emergency Lighting  
Computer Backup  
Solar Powered Systems.

## TECHNICAL FEATURES

Non-Spillable Sealed Construction  
Absorptive Glass Mat System (AGM System)  
ABS (Acrylonitrile Butadiene Styrene) container and cover  
Gas Recombination  
Maintenance-Free Operation  
Low Pressure Venting System  
Heavy-Duty Grids  
Low Self-Discharge - Long Shelf Life  
Wide Operating Temperature Range  
High Recovery Capability

## DESIGN LIFE

10 years at ambient temperature of 20°C / 68°F

## COMPLAINT STANDARDS

IEC 60896 PART 1 & 2  
BS6290-4,  
Eurobat Guide - HIGH Performance

## SPECIFICATIONS OF ESC BATTERIES

## AVAILABLE BOTH IN ABS PLASTIC & FLAME RETARDANT(FR) CONTAINERS

Battery Type	Nominal Voltage (V)	20 H Rate Capacity (AH)	Length (mm)	Width (mm)	Height (mm)	Total Height (mm)	Weight Approx (Kgs)	Terminal Type
ESC100-12	12	100	329	172	214	221	30.00	M6
ESC120-12	12	120	410	176	227	227	33.5	M8
ESC150-12	12	150	485	172	240	240	43.00	M8
ESC200-12	12	200	522	238	218	223	60.00	M8
ESC230-12	12	230	520	269	203	208	72.6	M8

## Made in Korea

# ES SERIES<sup>AGM</sup>

12V 40Ah - 12V 200Ah

The most advanced technology of Rocket, Valve Regulated Lead Acid batteries makes them highly useful in a brand range of application. Absorbent Glass Mat separators are used in these batteries. The use of high-purity calcium alloy maximizes the longevity of ROCKET batteries. So you will be assured with ROCKET batteries excellent performance in any circumstances.

ES Series high rate are specially designed to provide better cyclic life and are ideally suited for areas prone to frequent power failures.

The unique construction coupled with the use of special sealing epoxies and long sealing paths of ROCKET series ensures that no electrolyte leakage can occur from terminals or cases of any ROCKET Batteries. This feature ensures safe & efficient operation of ROCKET batteries in any position.

ROCKET Batteries have excellent Deep Discharge Recovery and Charge Acceptance even after deep or prolonged discharge.

### MAIN APPLICATIONS

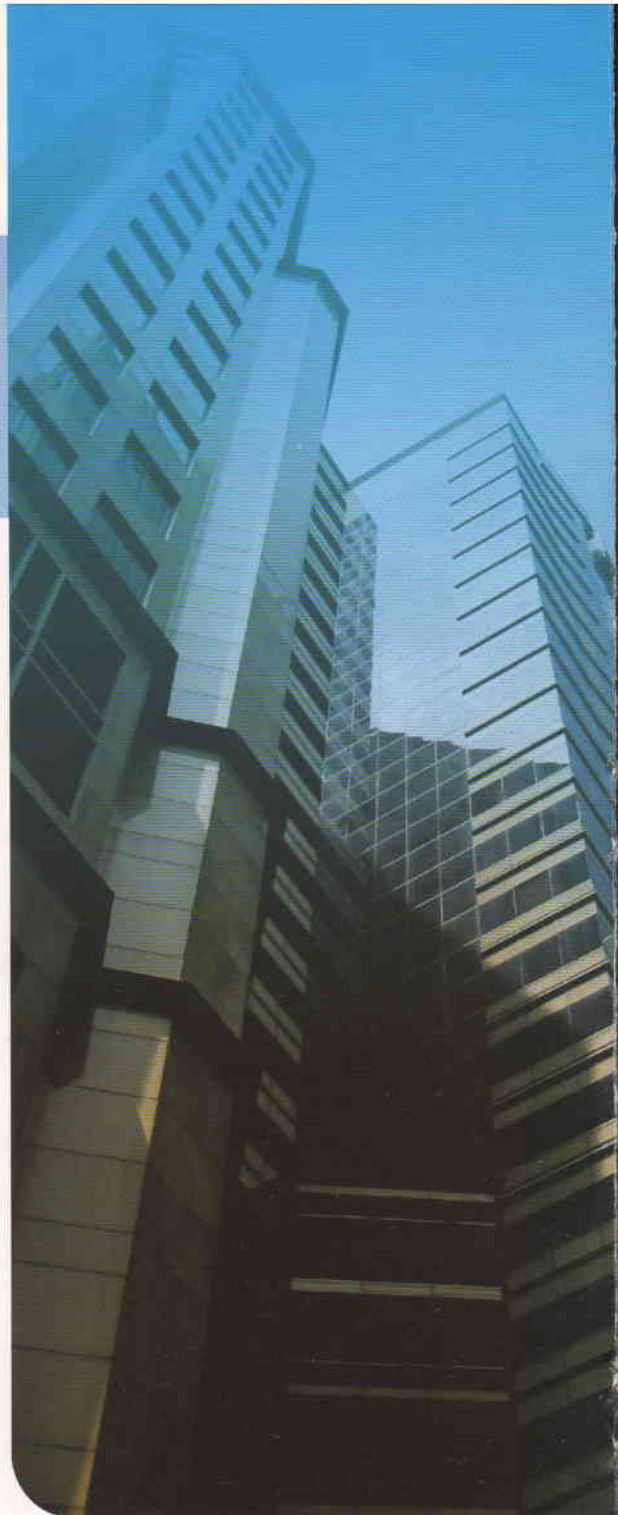
UPS  
 Telecommunication Equipment  
 Fire Alarm & Security Systems  
 Medical Instruments  
 Emergency Lighting  
 Computer Backup  
 Solar Powered Systems.

### TECHNICAL FEATURES

Non-Spillable Sealed Construction  
 Absorbent Glass Mat System (AGM System)  
 ABS (Acrylonitrile Butadiene Styrene) container and cover  
 Gas Recombination  
 Maintenance-Free Operation  
 Low Pressure Venting System  
 Heavy-Duty Grids  
 Low Self-Discharge - Long Shelf Life  
 Wide Operating Temperature Range  
 High Recovery Capability

### DESIGN LIFE

ES Series Designed for life of 10 years at an ambient temperature of 20°C / 68°F



### SPECIFICATIONS OF ES BATTERIES

Made In Korea

Battery Type	Nominal Voltage (V)	20 H Rate Capacity (AH)	Length (mm)	Width (mm)	Height (mm)	Total Height (mm)	Weight Approx (Kgs)	Terminal Type
<b>ES40-12</b>	12	40	197	165	170	170	12.8	M5
<b>ES65-12</b>	12	65	325	166	174	174	20.9	M6
<b>ES100-12</b>	12	100	443	167	204	237	32	M10
<b>ES130-12</b>	12	130	550	167	204	237	40	M10
<b>ES150-12</b>	12	150	520	269	203	237	50	M10
<b>ES200-12</b>	12	200	520	269	203	237	60	M10



## Long Life ESL Series<sup>AGM</sup>

12V 65Ah - 12V 230Ah

ESL Cyclic Power batteries have been engineered specifically for UPS applications, delivering maximum life while complying with rigorous industry standards. That is the reason why these batteries are the choice of many OEM UPS manufacturers and distributors.

In critical power applications, maximum battery life is essential. ESL Batteries have been specifically designed for maximum life to comply with rigorous industry standards which can cater to the temperature conditions of the Asia Pacific region. This is achieved by utilizing computer modeling, proper component materials selection and overall design criteria, as well as state-of-the-art automated manufacturing techniques. This has been validated through extensive life-cycle testing as well as years of in-service life in UPS applications.

### MAIN APPLICATIONS

UPS  
Telecom Communication Equipments  
Solar Powered Systems.

### ESL SERIES FEATURES & BENEFITS

Absorbent Glass Mat (AGM) technology for efficient gas recombination of up to 99% and freedom from electrolyte maintenance.

Long Life Alloy having the lowest calcium levels in the industry - minimizing grid growth, reducing gassing, and extending battery life.

UL Recognized Flame-arresting vents in each cell for safety and long life.

Flame retardant polypropylene case and cover compliant with UL 1778.

Proprietary Fixed Orifice Plate Pasting technology applying active materials on both sides of the grid for consistent cell-to-cell performance, higher capacity and uniform grid protection.

Thermally welded case-to-cover bond to eliminate leakage.

### DESIGN LIFE

12 years at an ambient temperature of 25°C/68°F

### SPECIFICATIONS OF ESL BATTERIES

Long Life

Battery Type	Nominal Voltage (V)	20 H Rate Capacity (AH)	Length (mm)	Width (mm)	Height (mm)	Total Height (mm)	Weight Approx (Kgs)	Terminal Type
ESL 65-12 FR	12	65	350	166	174	174	22.4	M6
ESL 100-12 FR	12	100	341	173	213	216	34.4	1/4-20 UNC
ESL 120-12 FR	12	120	407	173	210	239	39.5	M8
ESL 160-12 FR	12	160	483	171	240	240	51.2	M8
ESL 200-12 FR	12	200	522	207	216	240	61.5	M8
ESL 230-12 FR	12	230	522	240	216	240	72.5	M8



# ESG Series<sub>AGM</sub>

2V 200Ah - 2V 3000Ah

The ESG range of SMF VRLA batteries offers outstanding performance including a 20 year design life. Built to the highest standards and compliant with the latest IEC60896-21/22 standard this range also offers 100% capacity out-of-the box and is capable of handling deep discharges for complete peace of mind. The use of flexible connectors and ability to be installed both horizontally and vertically allows for multiple installation possibilities.

## MAIN APPLICATIONS

BTS & Telecommunications  
 Telecommunication  
 UPS Systems  
 Process plant and power transformer system  
 Navigation and signaling systems  
 Emergency lighting systems  
 Solar energy systems (PV)  
 Radio and broadcasting systems

## GENERAL FEATURES

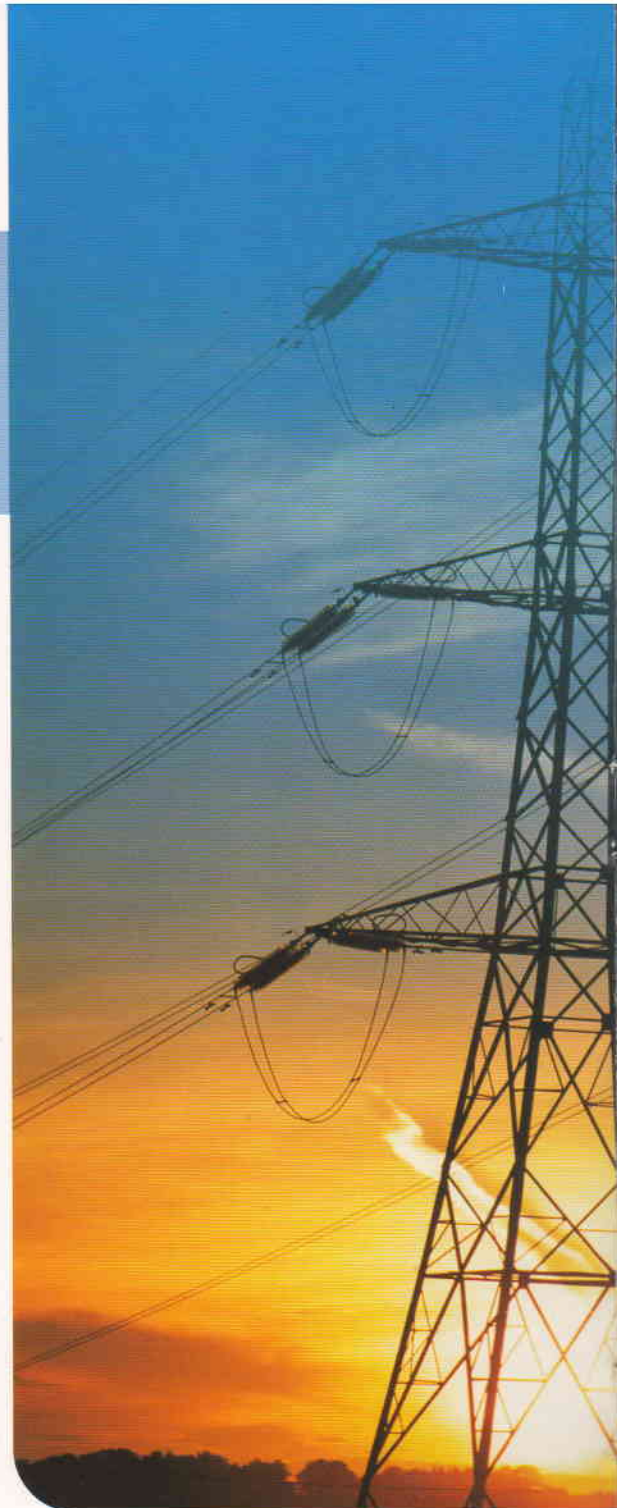
Better discharge characteristic than normal SMF VRLA batteries.  
 Non-spillable construction design.  
 Safety valve installation for explosion proof.  
 Higher safety & reliable construction.  
 Extra durability & deep cycle ability for heavy demand applications.  
 Low self-discharge characteristics.  
 Flexibility design for multiple installations.

## COMPLIANT STANDARDS,

IEC60896-21/22, BS6290 Part 4, Telecordia Sr4228, Eurobatt Guide, UL  
 Manufactured under system ISO9001 (TUV)

## DESIGN LIFE

20 years at an ambient temperature of 20°C/ 68°F



## SPECIFICATIONS OF ESG BATTERIES

Battery Type	Nominal Voltage (V)	20 H Rate Capacity (AH)	Length (mm)	Width (mm)	Height (mm)	Total Height (mm)	Weight Approx (Kgs)
ESG 200	2	200	94.5	184.5	360.5	372	14.3
ESG 300	2	300	123	184.5	360.5	372	19
ESG 400	2	400	166	184.5	360.5	372	26
ESG 500	2	500	194.5	184.5	360.5	372	31
ESG 600	2	600	223	184.5	360.5	372	37
ESG 800	2	800	154	229	555	566	52
ESG 1000	2	1000	186	229	555	566	62
ESG 1200	2	1200	225	229	555	566	75
ESG 1500	2	1500	265.5	229	555	566	92
ESG 2000	2	2000	349	233	555	566	121
ESG 3000	2	3000	496	363	361.7	373.5	175

# ESTG Series Tubular/OpzV+Gel

2V 200Ah - 2V 3000Ah

These are 2V Tubular gel batteries designed in such a way that it is special for solar storage system and the battery has good cycle ability. They consists of positive plate that adopts tubular type which can effectively prevent active substance falling, the positive plate frame is molded with multi-component alloy, the crystal particle of alloy structure is tiny and dense, and the corrosion-resisting performance is fine and service life is long.

## MAIN APPLICATIONS

Standby power supply for various communication and signal systems such as telecommunication, mobile, network, railway and airport.

Solar energy, wind energy, hydroelectric generation power storage and wind & solar hybrid project.

Standby power supply for ship and maritime affairs.

Standby power supply for petrochemical system.

Marine signal and navigation mark.

Information industry.

Standby power supply for UPS, medical facilities and emergency lighting.

Street lamp, CATV, oil and gas.

Situation with high environmental protection and energy-saving.

## GENERAL FEATURES

Designed service life of 20 years

High cycle service life

Better temperature resistance performance

Excellent deep cycle performance

Superior low current discharge performance

Better high temperature performance

Stronger constant power discharge capability

Better charge reception capability

Better safety performance and reliability

Modular and personified installation design

High Performance price ratio and low yearly operating cost

Eco-friendly, cycle application

## COMPLIANT STANDARDS

DIN 40742, IEC60896-2

## DESIGN LIFE

20+ years at an ambient temperature of 20°C/68°F

## SPECIFICATIONS OF ESTG BATTERIES

Battery Type	Nominal Voltage (V)	20 H Rate Capacity (AH)	Length (mm)	Width (mm)	Height (mm)	Total Height (mm)	Weight Approx (Kgs)
ESTG 200	2	200	103	206	354	390	18
ESTG 300	2	300	145	206	354	390	24
ESTG 420	2	420	145	206	470	506	33
ESTG 500	2	500	166	206	470	506	38.5
ESTG 600	2	600	145	206	645	681	45
ESTG 800	2	800	191	210	645	681	59
ESTG 1000	2	1000	233	210	645	681	73
ESTG 1200	2	1200	275	210	645	681	87
ESTG 1500	2	1500	275	210	795	831	103
ESTG 2000	2	2000	399	212	772	807	145
ESTG 3000	2	3000	576	212	772	807	220



# EAG Series<sup>AGM+GEL</sup>

2V 200Ah - 2V 3000Ah

The EAG battery is manufactured with AGM separator and colloidal silica. With semi-gelled electrolyte, stratification is improved or avoided. So battery has longer service life than conventional VRLA under floating application.

## MAIN APPLICATIONS

Solar and Wind energy systems  
 Communication equipment Uninterruptible power supplies  
 Telecommunication Systems  
 Electronic Cash Registers  
 Microprocessor based office machines  
 Other standby power supplies

## PRODUCT STANDARDS

Our batteries meet with the standards JIS, DIN, IEC & BS6290-4. ISO9001 & ISO14001 certification, UL approval and CE approval have been obtained for all type of batteries. All these certifications render our batteries to be compatible with requirements of world-level equipments.



## SPECIFICATIONS OF EAG BATTERIES

Battery Type	Nominal Voltage (V)	20 H Rate Capacity (AH)	Length (mm)	Width (mm)	Height (mm)	Total Height (mm)	Weight Approx (Kgs)	Terminal Type
EAG 200	2	200	94.5	184.5	360.5	372	14.3	F10
EAG 300	2	300	123	184.5	360.5	372	19	F10
EAG 400	2	400	166	184.5	360.5	372	26	F10
EAG 500	2	500	194.5	184.5	360.5	372	31	F10
EAG 600	2	600	223	184.5	360.5	372	37	F10
EAG 800	2	800	154	229	555	566	52	F10
EAG 1000	2	1000	186	229	555	566	62	F10
EAG 1200	2	1200	225	229	555	566	75	M8
EAG 1500	2	1500	265.5	229	555	566	92	M8
EAG 2000	2	2000	349	233	555	566	121	M8
EAG 3000	2	3000	496	363	361.7	373.5	175	M8

NOTE: We also provide customized capacities.



# EAG Series<sup>AGM+GEL</sup>

12V 7Ah - 12V 230Ah

The EAG battery is manufactured with AGM separator and colloidal silica. With semi-gelled electrolyte, stratification is improved or avoided. So battery has longer service life than conventional VRLA under floating application.

## MAIN APPLICATIONS

Solar and Wind energy systems  
Communication equipment Uninterruptible power supplies  
Telecommunication Systems  
Electronic Cash Registers  
Microprocessor based office machines  
Other standby power supplies

## PRODUCT STANDARDS

Our batteries meet with the standards JIS, DIN, IEC & BS6290-4. ISO9001 & ISO14001 certification, UL approval and CE approval have been obtained for all type of batteries. All these certifications render our batteries to be compatible with requirements of world-level equipments.

## SPECIFICATIONS OF EAG BATTERIES

Battery Type	Nominal Voltage (V)	20 H Rate Capacity (AH)	Length (mm)	Width (mm)	Height (mm)	Total Height (mm)	Weight Approx (Kgs)	Terminal Type
EAG 17-12	12	17	181	77	167	167	5.70	M5
EAG 40-12	12	40	197	165	170	170	13.50	M6
EAG 65-12	12	65	350	167	179	183	23.40	M6
EAG 100-12	12	100	330	171	214	220	32.00	M8
EAG 120-12	12	120	410	176	227	227	38.00	M8
EAG 150-12	12	150	485	172	240	241	47.00	M8
EAG 200-12	12	200	522	238	240	241	65.00	M8

# EST Series TUBULAR

2V 40Ah - 2V 2000Ah

Tubular batteries use positive tubular plates with low antimony alloy to reduce frequency of topping-up intervals. Negative plates are of pasted grid type with lead calcium alloy. Their separators are made of high quality micro porous material. Micro Porous aqua-trap Ceramic Vent Plugs for individual cell-prevent acid mist coming out from the cells making it convenient for living room ambience.

## MAIN APPLICATIONS

Solar powered systems  
Uninterrupted power supplies  
Telecommunication system  
Communication networks  
Emergency lighting systems  
Fire & Security Equipment  
Process control systems



## SPECIFICATIONS OF EST BATTERIES

Battery Type (2V Range)	Nominal Voltage (V)	Capacity @ 10Hr Rate end votlage of 1.85 V/Cell, 27°C in AH	Overall Dimensions (mm) up to terminal (Tolerance +/-5mm)			Dry Weight (Kg +/-5%)	Volume of Acid Approx (liters)
			L	W	H		
EST- 40-2	2	40	98	168	300	5.5	1.0
EST- 60-2	2	60	98	168	300	6.0	2.0
EST- 120-2	2	120	142	172	378	11.4	4
EST- 150-2	2	150	142	172	378	13.0	3.5
EST- 200-2	2	200	187	187	440	18.5	6.5
EST- 300-2	2	300	315	185	460	27.0	8.5
EST- 400-2	2	400	315	185	460	32.5	12.5
EST- 500-2	2	500	375	188	500	40.0	14.5
EST- 600-2	2	600	375	188	500	49.0	14.0
EST- 800-2	2	800	445	260	645	82.0	31.0
EST- 1000-2	2	1000	445	260	645	89.0	30.0
EST- 1200-2	2	1200	445	260	645	105.0	28.0
EST- 1500-2	2	1500	430	390	655	112.0	32.5
EST- 1800-2	2	1800	430	300	655	165.0	34.0
EST- 2000-2	2	2000	430	300	655	175.5	36.0

# EST Series TUBULAR

12V 20Ah - 12V 150Ah

Tubular batteries use positive tubular plates with low antimony alloy to reduce frequency of topping-up intervals. Negative plates are of pasted grid type with lead calcium alloy. Their separators are made of high quality micro porous material. Micro Porous aqua-trap Ceramic Vent Plugs for individual cell-prevent acid mist coming out from the cells making it convenient for living room ambience.

## MAIN APPLICATIONS

Solar powered systems  
Uninterrupted power supplies  
Telecommunication system  
Communication networks  
Emergency lighting systems  
Fire & Security Equipment  
Process control systems

## SPECIFICATIONS OF EST BATTERIES

Battery Type	Nominal Voltage (V)	C10 Capacity (AH)	Battery Weight		Overall Dimensions in (mm)+ mm			Approx Acid Qty. in Liters	Constant Current Charge (Amps)		Trickle Charge Current (mA)	
			Without Acid +5%	Without Acid +5%	L mm	W mm	H mm		Start	Finish	Min.	Max.
EST- 20-12	12	20	10	16	260	173	235	4.7	2.4	1.2	20	80
EST- 40-12	12	40	14	19	260	173	235	4.1	4.8	2.4	40	160
EST- 60-12	12	60	20	30	413	175	240	7.6	7.2	3.6	60	240
EST- 75-12	12	75	23	33	413	175	249	7.4	9.0	4.5	75	300
EST- 100-12	12	100	32	46	513	215	250	11.6	12.0	6.0	100	400
EST- 120-12	12	120	37	55	518	275	265	14.5	15.0	8.0	120	480
EST- 150-12	12	150	43	60	518	275	265	13.8	20.0	10.0	150	600



# EFT Series (AGM – Front Terminal)

12V 50 Ah – 12V 200 Ah

EFT series is designed with a Front Terminal Structure which makes installation easy and safe. Its high energy density construction makes it suitable for 19", 23", rack or cabinet installations. There is also the flexibility with options to have either top or side connections on the Monoblock, or even to customer's requirements a central gas collection system can be added as an additional feature.

## MAIN APPLICATION

Telecommunications  
 Uninterruptible power supply (UPS)  
 Switchgear / utility  
 Other applications to provide integrated stored energy system

## TECHNICAL FEATURE

Front-access terminal connections  
 Compatible with 19", 23" rack or cabinet  
 Excellent special lead-tin-calcium formula alloy for Grids and plates Microporous glass mats in low resistance as separator  
 Self-regulating pressure relief valve  
 Design Life: 12+ years expectant Life under full float service at 77°F(25°C)

## COMPLIANT STANDARDS

IEC60896-21/22  
 Bs6290 part 4  
 Telcordia Sr4228  
 Eurobatt guide  
 UL  
 Manufactured under system ISO9001(TUV)

## SPECIFICATIONS OF EFT BATTERIES

Type (2V Range)	Voltage (V)	Nominal Capacity @ 10Hr Rate to 1.80 V/cell 25°C in AH	Dimensions (mm)				Weight (Kg)
			Length	Weight	Height	Total Height	
EFT 50-12	12	50	390	105	227	227	21.5
EFT 65-12	12	65	395	105	270	270	24.5
EFT 85-12	12	85	395	105	270	270	30
EFT 100-12	12	100	558	125	227	227	39
EFT 105-12	12	105	511	110	238	238	34
EFT 125-12	12	125	558	125	270	270	49
EFT 150-12	12	150	558	125	310	310	53
EFT 155-12	12	155	559	125	283	283	54
EFT 170-12	12	170	558	125	310	310	56
EFT 200-12	12	200	498	259	238	238	74.5

# ESD Series (AGM, Deep Cycle)

12V 12Ah – 12V 200Ah

ESD series has thick plates with a high density material. These are specially designed to carry large amounts of stored current that are discharged between charging sessions. On top of which, the heavier non-porous battery plates are able to withstand repeated major discharging and charging cycles. Another feature of this series is its excellent recovery from Deep Discharge.

#### MAIN APPLICATION

Solar and Wind Power System  
Electric Power Vehicles  
Golf Cars and Buggies  
Wheel Chairs  
Power tools

#### GENERAL FEATURES

Superior Deep Cycle Design  
High Power Density  
Thick Plates and High-density Active Material  
Longer Life in Deep Cycle Applications  
Excellent Recovery from Deep Discharge

#### COMPLIANT STANDARDS

JIS C8702, BS 6290/4 and IEC 896/2  
Eurobat Guide/HF  
ISO9001/ISO14001

#### SPECIFICATIONS OF ESD BATTERIES

Type (2V Range)	Voltage (V)	Capacity @ 10Hr Rate	Dimensions (mm)				Weight (Kg)	Terminals
			Length	Weight	Height	Total Height		
ESD 12-12	12	11.8	151	98	95	101	4.4	F2
ESD 18-12	12	17.1	181	77	167	167	5.9	F3/F4
ESD 24-12	12	23	166	175	125	125	8.6	F3/F4
ESD 33-12	12	31.4	195	130	155	168	10.2	M6
ESD 40-12	12	38.8	197	165	170	170	13.5	M6
ESD 45-12	12	41.8	197	165	170	170	13.8	M6
ESD 55-12	12	51.7	239	132	205	210	18	M6
ESD 60-12	12	58.7	258	166	206	215	24	M6
ESD 65-12	12	60.7	350	167	179	179	23.4	M6
ESD 75-12	12	74.1	258	166	206	215	24	M6
ESD 80-12	12	80	564	115	189	189	28.2	F19
ESD 90-12	12	88.6	306	169	210	215	30	M6
ESD 100-12	12	95.5	330	171	215	220	32	M8
ESD 120-12	12	113	410	176	227	227	38	M8
ESD 150-12	12	143	485	172	240	240	47	M8
ESD 200-12	12	187	522	238	218	223	65	M8





**The Energy that prioritizes the environment - NICKEL HYDROGEN BATTERY**

Realizing MF and complete air-tightness, the industrial nickel hydrogen battery of GLOBAL BATTERY is environment-friendly and free of harmful heavy metals, such as Cadmium. Compared to the existing products in the same category, the nickel hydrogen battery is environment-friendly for the next-generation; its volume has been reduced to one-tenth of the original size and energy weight density has been increased more than six-times, as well as free installation in vertical or horizontal positions, depending on the user preference.



**Global Battery Co. Ltd., South Korea**  
formerly known as Global & Yuasa Co. Ltd.



Stuttgart - the central city of car technology in Germany - To live up to such a reputation, Stuttgart places high priority on environment cleanliness. GLOBAL BATTERY offers environment-friendly energy that considers both the future and environment. GLOBAL BATTERY is devoting its heart and soul into the development of environment-friendly energy, so humankind may enjoy increased convenience in a clean environment.

**R & D** By establishing the Central Research and Development Institute in 1988, GLOBAL BATTERY developed and commercialized airtight industrial Ni-MH battery for the next generation through ceaseless R&D activities and investment. Developing an environment-friendly alternative energy power system, such as the Ni-MH battery for hybrid cars, hybrid fuel cell systems, photovoltaic cells and wind power, etc., GLOBAL BATTERY is prepared for the future.

**The Enterprise that prepares for a convenient and clean future - GLOBAL BATTERY**





**Global Battery Co. Ltd., South Korea**  
formerly known as Global & Yuasa Co. Ltd.

## The Power that Moves the World!

Like an invisible storage battery that moves and brightens the world, GLOBAL BATTERY will quietly perform its duty to maintain and justify the faith of its customers. GLOBAL BATTERY will continue making efforts to enable humankind to enjoy convenience in a clean environment, ranging from storage batteries that move the world to the development of clean energy that brightens tomorrow.

A company that charges belief - GLOBAL BATTERY



## NORTH

### DELHI

Flat No. 4, Ground Floor,  
13/29, Adhunik Chamber,  
Hotel Siddharth Road,  
Patel Nagar (E),  
New Delhi - 110008.

### LUCKNOW

S/456, Transport Nagar,  
Kanpur Road,  
Lucknow - 12  
Tel.: 9369492646

### CHANDIGARH

222, Industrial Area,  
Phase - I,  
Chandigarh - 160018  
Tel.: 9316130646

### JAIPUR

Agresen Tower, Shop No. 6,  
V. K. I Area, Sikar Road,  
Opp. Road No. 4,  
Jaipur - 302013  
Tel.: 9314264637

### INDORE

UG-8, President Tower,  
Madhumilan Chouraha,  
Indore - 452001, M.P.  
Tel.: 9300880240

## EAST

### KOLKATTA

356, Jodhpur Park,  
Nr. Aurobindo Seba Kendra,  
Kolkatta - 700068  
Tel: 033-24991066

### PATNA

Vidhya Nilay House,  
Nr. Telephone Exchange,  
Beni Bagicha, Rajendra Path,  
Opp. Hotel Magadh,  
Beside of Hyundai Car Showroom,  
P.O. GPO, P.S. Gandhi Maidan  
Dist. Patna - 800001. Tel: 9334852096

### BHUBANESHWAR

C/o. Mohammed Ismail House No. 13/2,  
MIG II, BDA Colony,  
AT/P. Chandrashekarapur,  
Bhubaneshwar - 751016, Orissa  
Tel.: 9338037940

### JAMSHEDPUR

Gr. Floor, Sardar Surender Singh Complex,  
Hem Singh Bagan, New Kalimati Road,  
Sakchi, Jamshedpur (E) - 831001  
Tel.: 9304416182

### GUWAHATI

No : 22, Mother Teresa Road,  
Near Geetha Nagar Police Station,  
Guwahati - 781 021  
Tel No. : 8011051454

## WEST

### AHMEDABAD

105, Sarthik Square,  
Near Pakwan Hotel,  
Beside GNFC Tower,  
Satellite-Bodakdev, S.G. Highway,  
Ahmedabad - 380015.  
Tel.: 079-30122664

### PUNE

1265 Sadashiv Peth, 6th Floor,  
G3, Shubh Ashirwad Society,  
Off. Bajirao Road, Pune - 412030  
Tel.: 9326080646

### VAPI

196/2, Eastern Plastics Mills,  
Compound, 2nd Phase, Gidc,  
Near Ramdev Trading Co.  
Vapi (East), Gujarat - 396191  
Tel: 9376810646

## SOUTH

### BENGALURU

1st Floor, Site No. 27,  
No. 46A, 1st 'D' Main Road,  
Jakkasandra, 1st Block,  
Koramangala,  
Bengaluru - 560044  
Tel.: 080-41135957 / 34957

### CHENNAI

Shop No. 3 Parsn Manere,  
1st Floor, 442, Annasalai,  
Chennai - 600006  
Tel: 044-28280646

### SECUNDERABAD

26A, Minerva Complex,  
1st Floor, 94, S.D. Road,  
Secunderabad - 500003  
Tel.: 040-27896642

## SPECIAL ECONOMIC ZONE (SEZ) OFFICES

### COCHIN

Plot No. 43/A/SDF,  
1st Floor, 'D' Block,  
Cochin SEZ Kakkanad,  
Cochin - 682037  
Tel: 0484-2413369

## OVERSEAS

### ASIA PACIFIC

GLOBAL POWER SOURCE PTE. LTD  
10 Ubi Crescent #04-20 Ubi  
Techpark Lobby B  
Singapore - 408564  
Tel: +65 6338 6879

### MIDDLE EAST

GLOBAL POWER SOURCE FZE  
Executive Suite,  
P. O. Box. 121928,  
Sharjah - UAE  
Tel: +971 50 3439297

### UNITED KINGDOM

GLOBAL POWER SOURCE (EUROPE) LTD.  
Regd. Off.: 311, Shoreham Street,  
Sheffield, S2 4FA, UK.  
Tel.: +44(0)7503163421

### ITALIA

GLOBAL POWER SOURCE (ITALY) S.R.L.  
Foro Buonaparte, 70, 20121,  
Milano MI, ITALIA  
Tel.: +39 3409874212

## CONTACT US

### HEAD OFFICE: MUMBAI, INDIA

Global Powersource (India) Pvt. Ltd.

C10, Satyam Shopping Center, Mezzanine Floor,  
M.G. Road, Ghatkopar East, Mumbai - 400077.

Tel.: 40460646 | Fax : 21021042

E-mail: info@rocketbatteries.net | www.rocketbatteries.net

Ver.: IN-002

Unlimited Power  
**ROCKET**  
Since 1952  
BATTERY